



West Sussex Affordable Energy

Working in partnership

www.westsussexenergy.co.uk



The West Sussex Affordable Warmth Partnership is a collaboration of the District and Borough Councils of West Sussex, coordinated by the West Sussex Fuel Poverty Coordinator. This newsletter aims to provide householders and front line workers with advice on local schemes and support services whilst providing impartial information on how to make energy more affordable and keep warm and well in their homes.

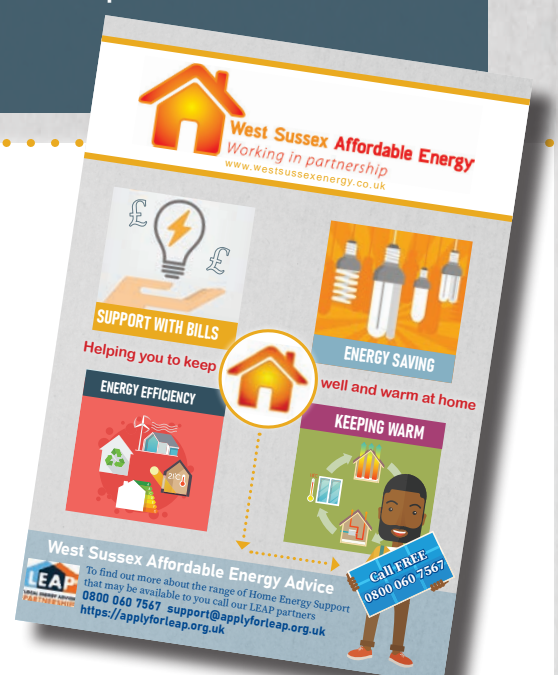


Contents

- p1** - Welcome to the Newsletter
- p2** - Support available for residents this winter
- p3** - Future Plans:
Green Home Grant - Launched September 2020
- p4** - Other organisations that can help

Welcome to the West Sussex Winter 2020-21 Affordable Energy Newsletter. This edition provides updates on the home energy support available for resident across West Sussex this Winter. Residents will be able to access support and information on saving money on their energy bills, keeping warm and well as well as eligible residents accessing additional support schemes. The West Sussex Affordable Warmth Partnership also update and maintain the West Sussex energy website where you will find further information on the items listed within this Newsletter.

<https://www.westsussexenergy.co.uk>



Support available for residents this winter

Covid-19 There is currently a wide range of home energy support available across West Sussex. However due to the impact of Covid 19 and the guidelines set out by the Government, changes to these services are now in place to keep you and our home energy advisors safe. With many of us spending more time at home than ever simple changes in our behaviour, accessing money saving schemes and taking advantage of new insulation and low carbon technology funds will help to keep us all warm and well at home.



If you are finding it harder to manage your energy bills or are worried about this winter please get in contact as soon as you can, support is available to you. The eligibility requirements of our home energy schemes are designed to target households that either are already in or are at risk of falling into fuel poverty. It is open to all types of householders – homeowners, private renters and social housing tenants.

LEAP offers support for lower income households telephone for further information and support: 0800 060 7567/
support@applyforleap.org.uk/
<https://applyforleap.org.uk>

Part of the LEAP service also includes:

ECHO is an emergency scheme offering a free-of-charge service to vulnerable lower income households whose gas boiler have broken down. It is aimed at households that are vulnerable and need immediate assistance to stay warm and well.
www.emergencyheating.org.uk

Warmer Homes is a Warm Home Fund project that provides free gas connections and first time central heating for the vulnerable. Warmer Homes aims to reduce bills, increase comfort in non-gas households, and improve health outcomes for residents across all tenures. www.warmerhomes.org.uk

HEART supports fuel poor and vulnerable households through the replacement of old, inefficient fridges, fridge/freezers, washing machines and cookers with modern, efficient alternatives. These households will be either in fuel poverty, in danger of falling into fuel poverty, or otherwise vulnerable.
<https://www.applyforheart.org.uk/>

Arun and Chichester Wellbeing Home -

Wellbeing Home is an all year home energy advice service in Arun and Chichester Districts. It offers support to vulnerable low-income clients, specifically looking to reduce the health impacts of living in a cold home. It offers advice to owner occupiers and private tenants. They can also help clients apply for grants and any other council administered grants for new heating. The HEA's have a wide knowledge of local support groups and services to signposting clients onto. You can self refer or be referred by a professional when consent is given.

Chichester: Call 01243 521 041 or to find out more and make a secure referral out the secure <https://chichester.westsussexwellbeing.org.uk/topics/healthy-home/keep-warm>

Arun: call 01903 737862 or to find out more and make a secure referral out the secure <https://arun.westsussexwellbeing.org.uk/topics/healthy-home/keep-warm>

West Sussex Citizen Advice: 0344 477 1171

Offer a wide range of service to help you reduce household bills, save energy, access discounts and grants, benefit application support, debt support, energy comparisons, emergency support, Comparing providers for other services, e.g. broadband and more.

The Emergency Heater Scheme

Please note - professional referrals only. Requests will not be accepted directly from members of the public.

If a resident has no working heating system, no additional plug in heaters and is on a low income or vulnerable then they could benefit from the West Sussex Emergency Heater scheme. Eligible residents are provided with an oil-filled plug-in The heater is a stopgap until the client is able to have their central heating system repaired or replaced. To qualify for an emergency heater the client must be a homeowner or living in private rented accommodation with no working heating system. (Household income of less than £18,000 P/A) and have a vulnerability to the cold. For more information and to make a referral: <https://www.westsussexenergy.co.uk/article/31604/Emergency-heater-scheme>
Or call the West Sussex Fuel Poverty Coordinator for further advice: 01903 737537

Broken heating systems: Each District and Borough has eligibility criteria to support low income, vulnerable/disabled residents who have a broken heating system. You can contact your local Housing department to see if you qualify for any local assistance. Further information available at <https://www.westsussexenergy.co.uk/article/31507/Local-help-and-advice>



Future plans

Green Home Grant - Launched September 2020

How do I get a grant?

The Green Home Grant voucher scheme provides vouchers of up to £5,000, with lower income households able to receive up to £10,000. The emphasis with this scheme is to help households install low carbon heating and insulation improvements.

You can find out more or apply for a Green Home Grant voucher by visiting www.simpleenergyadvice.org.uk/grants or Call 0800 444202

How much are the vouchers worth?

The voucher scheme is composed of two parts:

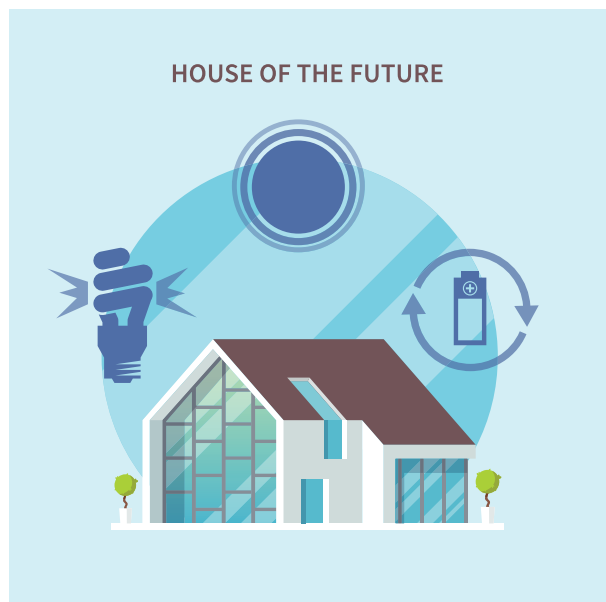
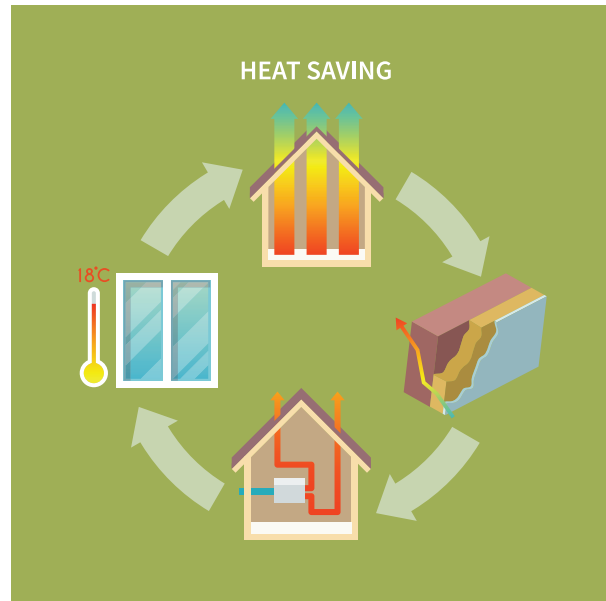
1. The main scheme: funding to provide homeowners, park home owners and landlords with a two thirds subsidy towards energy efficiency and heat measures, up to the value of £5,000 of government contribution.
2. The low-income element: funding specifically targeted at low-income owner occupiers and park home owners, funding 100% of the value of energy efficiency and heat measures up to the value of £10,000.

What can I do now?

Head to the Green Homes Grant guide on the Simple Energy Advice website. From here, you can check eligibility and find home improvements. You will then be asked to complete a survey about your home and its occupants to identify what measures might be suitable. Simple Energy Advice will suggest options with cost estimates and the contact details of local eligible tradespeople who could carry out the work.

For more information please see the link below:

<https://energysavingtrust.org.uk/home-insulation/green-homes-grant-scheme>



Other organisation that can help

The organisations below offer further support on home energy advice, affordable warmth and have created advice sheets in a variety of formats and languages. Advice sheets available in Polish, Arabic, Punjabi, Urdu, easy read, and videos in British Sign Language.

Resources ideal for front line workers working within the community.

NATIONAL ENERGY ACTION – Front line staff training opportunities
<https://www.nea.org.uk/training/webinars/>

WEST SUSSEX ENERGY WEBSITE – West Sussex website created in partnership by the district and borough councils of West Sussex to provide householders with advice and impartial information on how to make energy more affordable.
<https://www.westsussexenergy.co.uk/>

CENTRE SUSTAINABLE ENERGY – Useful resources and facts sheets. Includes translations into Arabic and Polish. <https://www.cse.org.uk/resources/category:advice-leaflets>

NEA Information and Resource sheet – Useful advice sheets, some translations in Polish, Punjabi and Urdu.
<https://www.nea.org.uk/advice/information-leaflets/>
<https://www.nea.org.uk/advice/steps-affordable-warmth-videos-bsl-signing/>
<https://www.nea.org.uk/advice/help-during-the-covid-19-period/>

NHS KEEPING WELL WEBSITE – Top tips for keeping well at home
<https://www.nhs.uk/live-well/healthy-body/keep-warm-keep-well/>



Don't forget to apply for the Warm Home Discount - Low income households could get £140 off their electric bills. <https://www.westsussexenergy.co.uk/article/31498/Warm-Home-Discount-scheme>.

Park Home Residents who pay the Park Site for Electric can apply too.



WEST SUSSEX AGE UK – independent local charity working in the community to support older people, their families and carers.
<https://www.ageuk.org.uk/westsussex/>
01903 731800 or email information@ageukwestsussex.org.uk

WEST SUSSEX WELLBEING – Support and advice a how to keep well, get fit a service that aims to improve the health and wellbeing of West Sussex residents.
<https://www.westsussexwellbeing.org.uk/>
- contact your local District or Borough for your local Wellbeing Hub.

West Sussex Affordable Energy Advice

If you wish to discuss or follow up on any of the content of the newsletter please contact Emma.Pagett@arun.gov.uk. Please note for Home Energy support enquiries residents should contact LEAP for further advice.

